

Name:

Klasse:

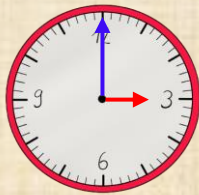
Datum:

Zeitdauer und Zeitpunkte berechnen

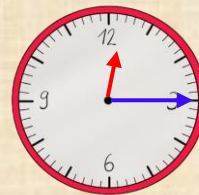
Die Zeitdauer auf dem Pfeil zeigt, wie viel Zeit vergangen ist. Für die **Stunden** schaust du, wie weit der **kleine Zeiger** gewandert ist. Für die **Minuten** schaust du auf den **großen Zeiger**.

1 Stunde = 1 h

1 Minute = 1 min

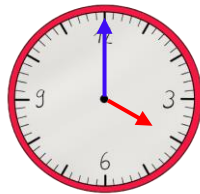
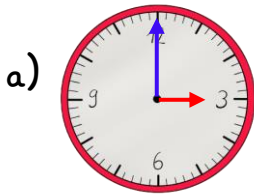


1:00 Uhr $\xrightarrow{2h}$ 3:00 Uhr

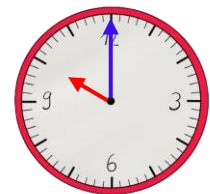
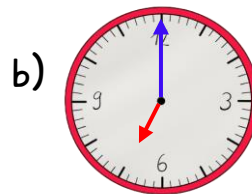


12:05 Uhr $\xrightarrow{10min}$ 12:15 Uhr

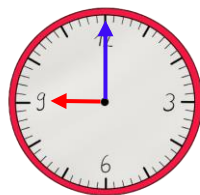
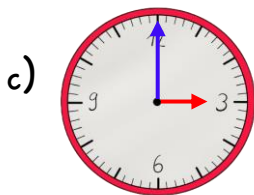
1. Schreibe auf den Pfeil, wie viele **Stunden** vergangen sind



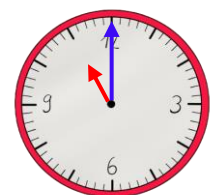
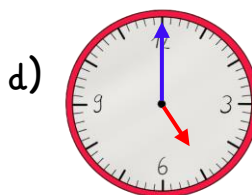
3:00 Uhr \longrightarrow 4:00 Uhr



7:00 Uhr \longrightarrow 10:00 Uhr

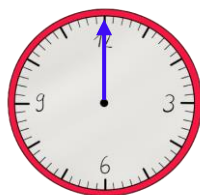
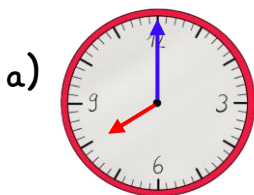


3:00 Uhr \longrightarrow 9:00 Uhr

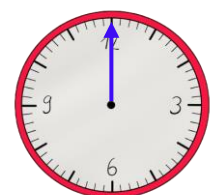
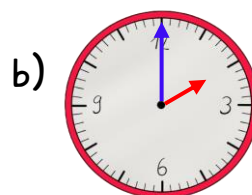


5:00 Uhr \longrightarrow 11:00 Uhr

2. Zeichne die fehlenden Zeiger richtig ein. Wie spät ist es?



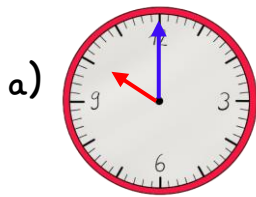
8:00 Uhr $\xrightarrow{2h}$ _____



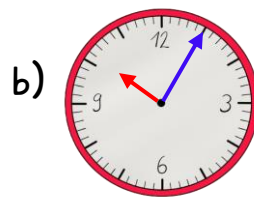
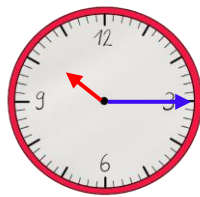
2:00 Uhr $\xrightarrow{5h}$ _____



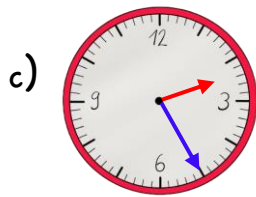
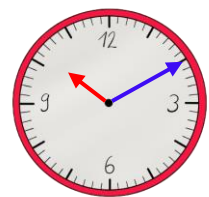
3. Schreibe auf den Pfeil, wie viele **Minuten** vergangen sind



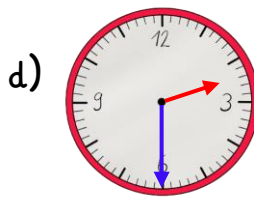
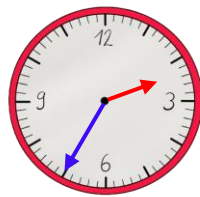
10:00 Uhr →



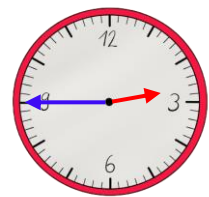
10:05 Uhr →



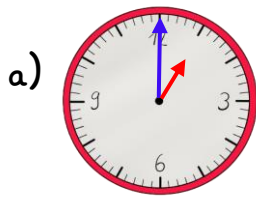
2:25 Uhr →



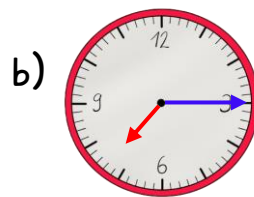
2:30 Uhr →



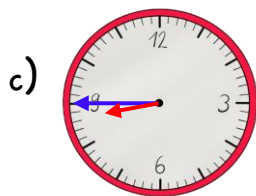
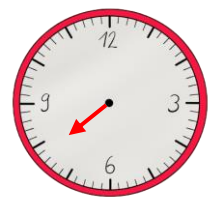
4. Zeichne die fehlenden Zeiger richtig ein. Wie spät ist es?



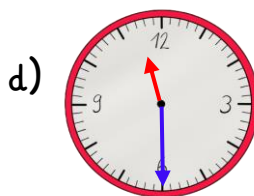
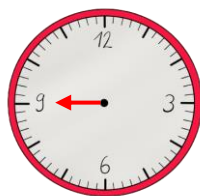
1:00 Uhr $\xrightarrow{30 \text{ min}}$ _____



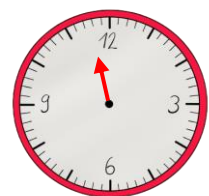
7:15 Uhr $\xrightarrow{30 \text{ min}}$ _____



8:45 Uhr $\xrightarrow{15 \text{ min}}$ _____



11:30 Uhr $\xrightarrow{10 \text{ min}}$ _____

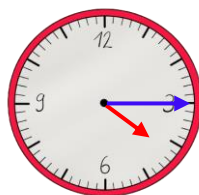


5. Berechne die Uhrzeiten.

2 h später: _____

6 h später: _____

3 h früher: _____



5 min später: _____

30 min später: _____

10 min früher: _____

